

SIC302D

Photo Interrupter

Dimensions

Unit:mm

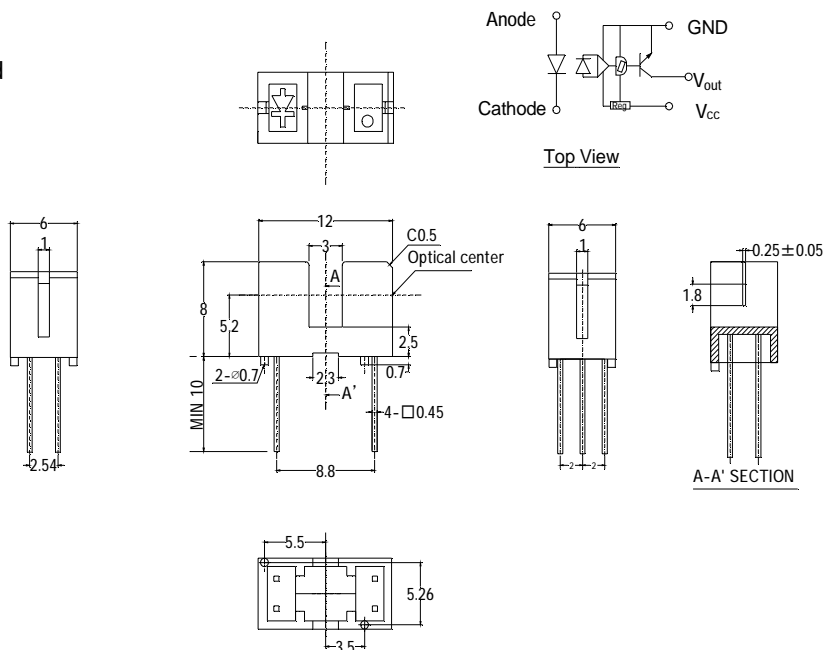
The SIC302D is a transmission type photointerrupter combined high power infrared LED with photo IC. Being suitable for highly accurate position detecting, it is great help in developing an object detecting system of high performance and high reliability.

Features

- PCB direct mount type
- GAP:3mm
- RoHS Compliance
- With the installation positioning boss

Applications

- Copiers
- Facsimiles
- Auto stampers
- Ticket vending machines



Maximum Ratings

(Ta=25°C)

Item	Symbol	Ratings	Unit
Input	Power dissipation	P _D	100
	Forward current	I _F	60
	Reverse voltage	V _R	5
	Pulse forward current ^{*1}	I _{FP}	1
Output	Supply voltage	V _{CC}	-0.5~7
	Low level output current	I _{OL}	16
	Power dissipation	P _O	100
Operating temperature ^{*2}		T _{opr}	-20~+85
Storage temperature ^{*2}		T _{stg}	-30~+85
Soldering temperature ^{*3}		T _{sol}	260

* General Tolerance(±0.2mm)

* 1. Pulse width: $t_w \leq 100\mu s$ period: $T = 10ms$

* 2. No icebound or dew

* 3. For MAX. 3 seconds at the position of 1.2mm from the resin edge.

Elector-Optical Characteristics

(Ta=25°C)

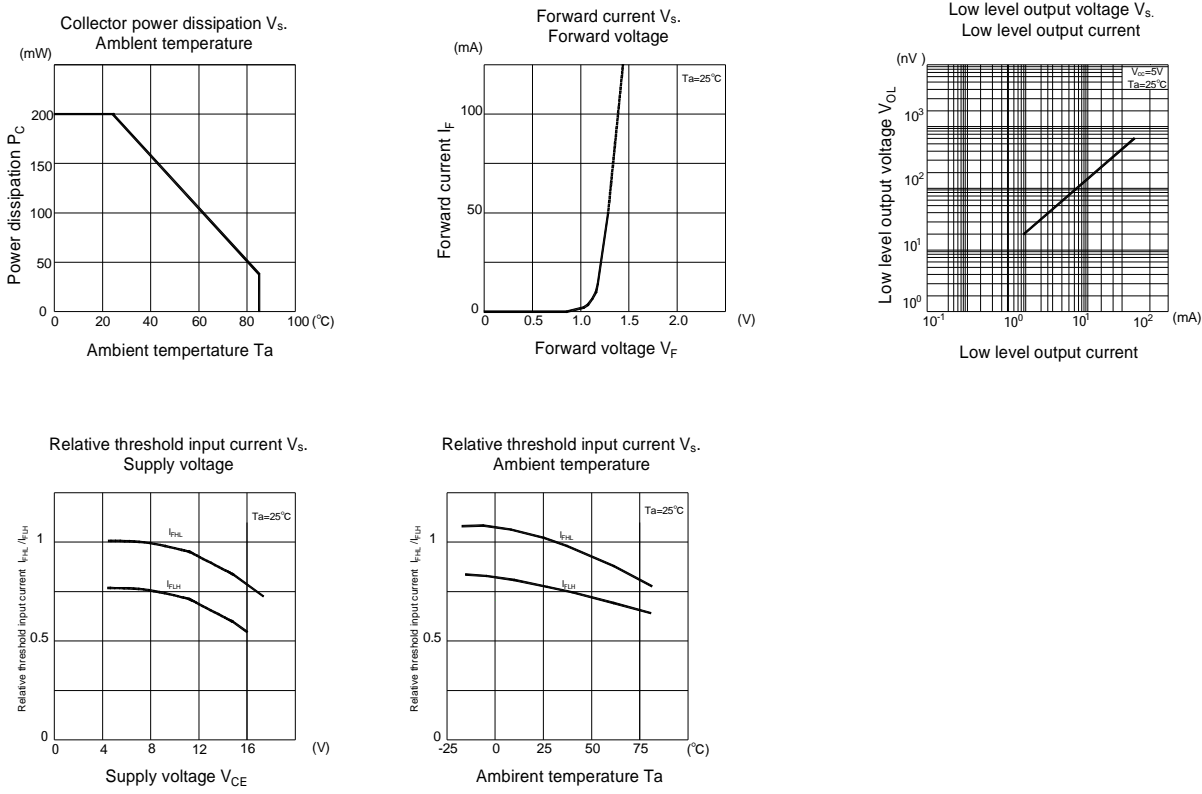
Item	Symbol	Conditions	Min	Typ	Max	Unit
Input	Forward voltage	V _F	I _F =20mA	-	1.2	1.4
	Reverse current	I _R	V _R =5V	-	-	10
	Peak wavelength	λ_p	I _F =20mA	-	940	-
Output	Operating supply voltage	V _{CC}	-	4.5	-	5.5
	Low level output voltage	V _{OL}	V _{CC} =5V, I _F =0mA, I _{OL} =16mA	-	-	0.4
	High level output voltage	V _{OH}	V _{CC} =5V, I _F =12mA, R _L =10K Ω	4.5	-	-
	Low level supply current	I _{CC}	V _{CC} =5V, I _F =0mA, R _L =10K Ω	-	-	10
	High level supply current	I _{CC}	V _{CC} =5V, I _F =20mA, R _L =10K Ω	-	-	10
Transmission	L→H threshold input current ^{*4}	I _{FHL} / I _{FLH}	V _{CC} =5V, R _L =10K Ω	-	-	10
	Hysteresis ^{*5}	I _{FLH}	V _{CC} =5V, R _L =10K Ω	-	0.8	-
	L→H propagation time	t _{PLH}	V _{CC} =5V, I _F =18mA, R _L =3.3K Ω	-	3	-
	H→L propagation time	t _{PHL}		-	1	-
Rise time		t _r		-	0.6	-
Fall time		t _f		-	0.02	-

* 4. I_{FLH} represents forward current when output changes from low to high.* 5. I_{FLH} represents forward current when output changes from high to low.

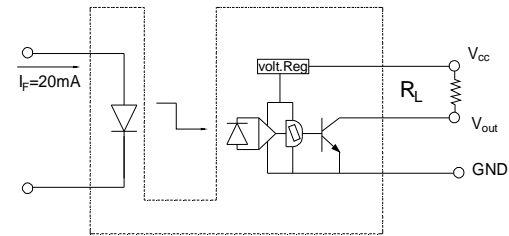
The contents of this data sheet are subject to change without advance notice for the purpose of improvement. When using this product, would you please refer to the latest specifications.

Photo Interrupter

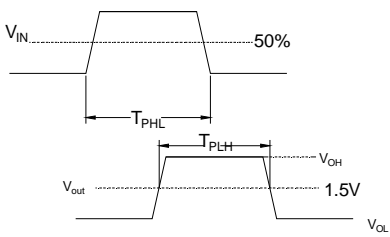
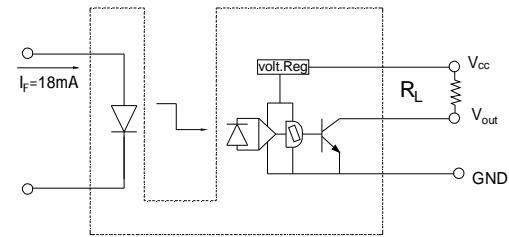
SIC302D



Measurement of high output voltage



Measurement of propagation time



The contents of this data sheet are subject to change without advance notice for the purpose of improvement.When using this product, would you please refer to the latest specifications.

Packing Specification

- 1.Fixed quantity (max 200pcs) of the products are packed into plastic bag(300*380)
- 2.Ten bags of the products are put into #2 box(max 2000pcs)
3. Two #2 Boxes are put into #3 Box(max 4000pcs)
4. Packing slit is pasted on #3 box.

